

GROUP ASSEMBLY PARTS LIST

Figure and Index Number	SPCC-MFR Number	Hamilton Part Number	Part Name						Units Per Assy.
			1	2	3	4	5	6	
	F.S.S.C. 18-W-121	++37124	Non-Gimbal 35-Size Chronometer Watch Assembly						1
50-1	H18-HM-10078	*37120	Case - Carrying, non-gimbal watch, complete						1
50-2	H18-HM-10079	*37119	Box - Padded						1
50-3	H18-HM-10080	37624	Case and Movement Assembly - Non-gimbal chronometer watch						1
	H18-HM-10081	37028	Case Assembly - Non-gimbal chronometer watch						1
50-4	H18-HM-10082	*37031	Back - Case						1
50-5	H18-HM-10088	*37032	Cap - Inside snap						1
50-6	H18-HM-10085	*37029	Bezel - Complete with crystal						1
50-7	H18-HM-10086	37029A	Crystal						1
50-8	H18-HM-10087	*37030	Ring - Case						1
50-9	H18-HM-10083	37033	Crown						1
50-10	H18-HM-10084	37055	Stem - Winding						1
50-11	H18-HM-10089	37035	Plug - Dustproof stem seal						1
50-12	H18-HM-10072	37036	Sleeve - Stem						1
50-13	H18-HM-10074	37037	Spring - Stem sleeve						1
50-14	H18-HM-10070	37038	Ring - Stem sleeve spring seat						1
50-15	H18-HM-10090	37022	Screw - Case						2
50-16	H18-HM-10076	*37117	Watch Movement - Chronometer, 35-size, model 22 (1-Ref.)						

\*Not recommended for stocking.

++Non-Gimbal Chronometer Watch Assembly Unit No. 37124 and Gimbal Chronometer Watch Assembly Unit No. 37125 differ only in the manner of mounting the Model 22 Movement, which they both contain. The non-gimbal chronometer watch is being withdrawn from service and will become an item of special issue.

GROUP ASSEMBLY PARTS LIST

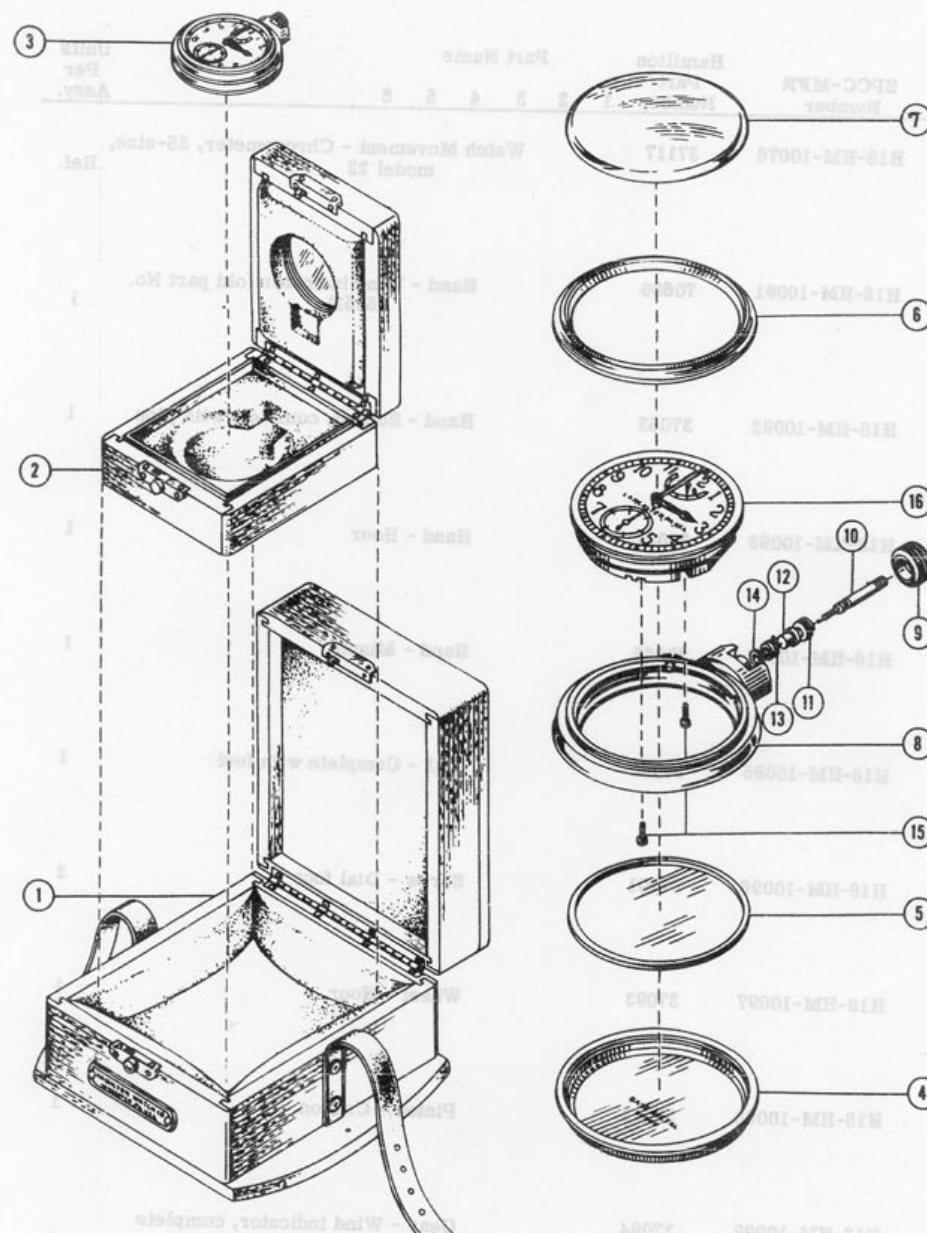


Figure 50